

EPMi Joineries

100% INNOVATION
100% DESIGN

100% PATENTED



	70 mm	80 mm	90 mm
	Mixed ALU / PVC	100% PVC + ALU shells	100% PVC + ALU shells
Double glazing	Uw 1,3 / Sw 0,53 / Tlw 66%	Uw 1,1 / Sw 0,53 / Tlw 66%	Uw 1,1 / Sw 0,52 / Tlw 66%
Triple glazing	Uw 0,97 / Sw 0,42 / Tlw 59%	Uw 0,82 / Sw 0,42 / Tlw 59%	Uw 0,70 / Sw 0,41 / Tlw 59%



The best window coef
Uf and Uw !

Passive House Window

The real window **No.1**

EPMi Joineries is a design office creator of **innovative ranges**.

This **patented solution** guarantees the protection of your markets through innovation and protects you against the European competition.

These profiles are better than :

- Aluminium joineries because **better insulation**
- Current PVC joineries because **more glazing surface**
- German profiles because **thinner and more efficient**

Its **hidden opening frame** offers lightness and strength to the window. Curve of the fixed frame brought modernity and discretion to any building that integrates. This set is **contemporary**.

Product **color** customization is easy with the **PVC or ALU** fixed frame that will satisfy a large number of your customers.



OUR RANGE FACING COMPETITION

70 mm : Light-Design

	EPMi Joineries ALU/PVC	ALUPLAST Ideal5000 100% PVC	PROFIALIS Performance 100% PVC
Uw (with Ug = 1,1 and Ug = 0,7)	1,3 / 0,97	1,3 / 0,99 (0,93 if Ug=0,6)	1,3 / 0,99 (0,92 if Ug=0,6)
Sw* (with Ug = 1,1 and Ug = 0,7)	0,53 / 0,42	0,48 / 0,38	0,48 / 0,38
Tlw* (with Ug = 1,1 and Ug = 0,7)	66% / 59%	58% / 51%	60% / 53%
Edge section renovation***	60 mm	88 mm	105 mm
Edge section french inst.*	53 mm	84 mm	85 mm
Central width with 2 leaf	106 mm	116 mm	116 mm



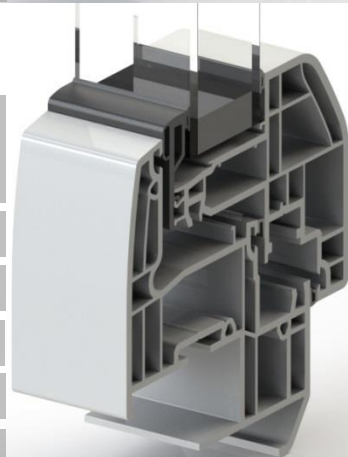
80 mm : Full-Light**

	EPMi Joineries 100% PVC	SOCREDIS LUX-Line 100% PVC	SCHÜCO Corona Si 82 100% PVC
Uw (with Ug = 1,1 and Ug = 0,7)	1,1 / 0,82	1,2 / 0,92 (0,77 if Ug=0,5)	1,2 / 0,91 (0,78 if Ug=0,5)
Sw* (with Ug = 1,1 and Ug = 0,7)	0,53 / 0,42	0,51 / 0,40	0,47 / 0,37
Tlw* (with Ug = 1,1 and Ug = 0,7)	66% / 59%	64% / 57%	59% / 52%
Side section renovation ***	60 mm	94 mm	/
Side section french inst *	53 mm	64 mm	90 mm
Central width with 2 leaf	106 mm	108 mm	142 mm



90 mm : Full-Therm**

	EPMi Joineries 100% PVC	FINSTRAL NovaLine90 100% PVC	VEKA Alphaline90 100% PVC
Uw (with Ug = 1,1 and Ug = 0,6)	1,1 / 0,70	1,1 / 0,78	1,2 / 0,84 (0,78 if Ug=0,5)
Sw* (with Ug = 1,1 and Ug = 0,6)	0,52 / 0,41	0,50 / 0,40	0,47 / 0,37
Tlw* (with Ug = 1,1 and Ug = 0,6)	66% / 59%	63% / 56%	59% / 52%
Side section renovation ***	62 mm	/	/
Side section french inst *	56 mm	69 mm	88 mm
Central width with 2 leaf	129 mm	121 mm	132 mm



 **The best window coefficients !**
Uf = 0,72 / Uw 0,70

* Over the wall. Values calculated with the recommended installation for a 1 leaf window 1,48x1,25 m : -30 mm on side jambs and on the head jamb.

** Aluminum shells, lacquering or optional film-coating.

*** In renovation, the old frame is completely recovered by the new frame (60 mm).

EPMi Joineries
Rennes – Brittany – France



Design

Light

Technology

Reliability

Optimisation

Insulation

Innovation

Performance

contact.epmi@gmail.com / +33 (0)6 86 98 40 19

www.facebook.com/EpmiMenuiseries

www.passivfenster.org

